

EARTH-SHIELD

THERMAL FOAM

PRODUCT DESCRIPTION

EARTH-SHIELD is engineered to increase energy efficiency, provide a clean finished appearance, and simplify installation for all residential, post frame, light-gauge steel, and commercial insulation appliances. The core of the product is made of a solid layer of flexible foam designed to provide excellent insulation characteristics in a moisture proof design. The core is 1/8" thick and comes standard at 1/4" providing additional insulation value and durability. In addition, the multiple facing combinations are thermally bonded in a unique process that provides long-term quality finish to every EARTH-SHIELD roll.

FEATURES & BENEFITS

- Reflects up to 97% of radiant energy
- Non-toxic lightweight rolls
- Durable construction and long-lasting toughness
- Excellent vapor barrier
- Multiple facing combinations
- Easy installation with utility knife and tape
- Bird and insect resistant
- Increase system thermal performance
- Use in retrofit or new construction

PRODUCT USE

EARTH-SHIELD can be used for new construction as well as retrofit in a variety of applications, such as post frame, horse, dairy or livestock buildings as well as for finished walls, building insulation, condensation control, and as a thermal break and vapor barrier. This product can be perforated for applications where a vapor barrier is not needed such as behind siding or in an attic.

APPLICATIONS

- Post Frame
- Metal Frame
- Metal Roofs
- Agricultural
- Residential
- Retrofit
- Light-gauge Steel
- Workshops
- House Wrap
- Attics

FACING OPTIONS

- White Poly
- White Woven
- Reflective
- Foil
- Perforated

ROLL SIZES

- 4' x 125' (500 sqft)
- 24" x 125' (2 rolls / 500 sqft)
- 16" x 125' (3 rolls / 500 sqft)
- 12" x 125' (4 rolls / 500 sqft)
- 4' x 250' (1000 sqft)
- 24" x 250' (2 rolls / 1000 sqft)
- 16" x 250' (3 rolls / 1000 sqft)
- 12" x 250' (4 rolls / 1000 sqft)
- Custom Widths and Lengths



PRODUCT SPECIFICATIONS

Core

1/4" & 1/8" moisture-proof polyethylene (R-VALUE = 0.92 core only)

Face

- White Poly
- White Woven
- Foil
- Reflective

System Thermal R-Values (ft²·h·°F/Btu)

- Downwards (7/16" OSB / 2.75" Airspace / Solex / 2.75" Airspace / 1/2" Gypsum) 13.4
- Upwards (7/16" OSB / 2.75" Airspace / Solex / 2.75" Airspace / 1/2" Gypsum) 8.0
- Horizontal (Vinyl Siding / 1" Airspace / Solex / 7/16" OSB) 5.8
- Horizontal (Vinyl Siding / 2.75" Airspace / Solex / 2.75" Airspace / 1/2" Gypsum) 9.5

Surface Reflectivity

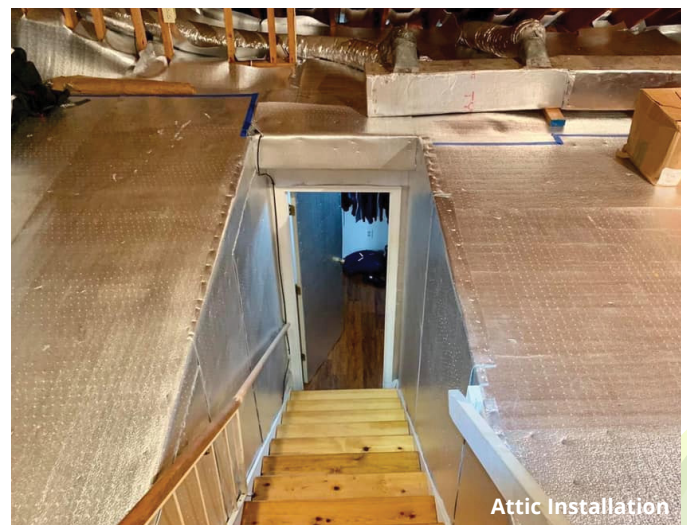
- Foil up to 97%
- White N/A
- Reflective up to 94%

Flame Spread / Smoke Spread – ASTM E84

- White Poly or White Woven Exposed 0/15
- Reflective Exposed 0/10
- Foil Exposed* N/A

Unusable Temperature

200° F / 93° C



Read This Before You Buy: The chart shows the R-value of this insulation R means resistance to heat flow. The higher the R-value, the greater the insulating power. Compare insulation R-values before you buy. There are other factors to consider. The amount of insulation you need depends mainly on the climate where you live. Also, your fuel savings from insulation will depend on climate, the type and size of your structure, the amount of insulation already in your structure, and your fuel use patterns and occupancy. If you buy too much insulation, it will cost you more than you'll save on fuel. To get the marked R-value, it is essential that this insulation be installed properly. *Foil facings should be covered by a thermal barrier, please check local building requirements.